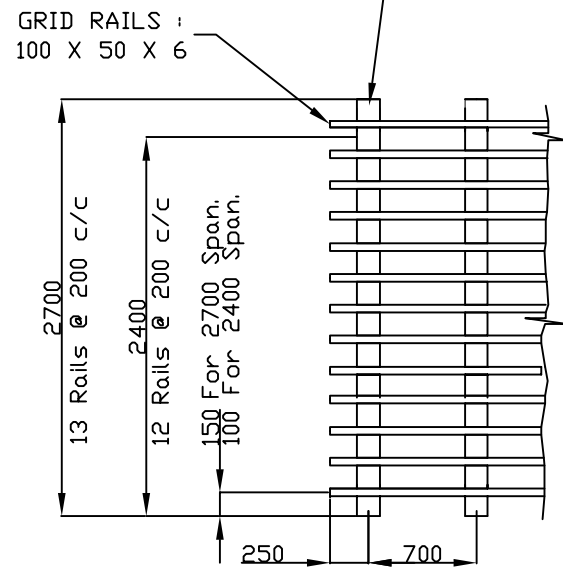
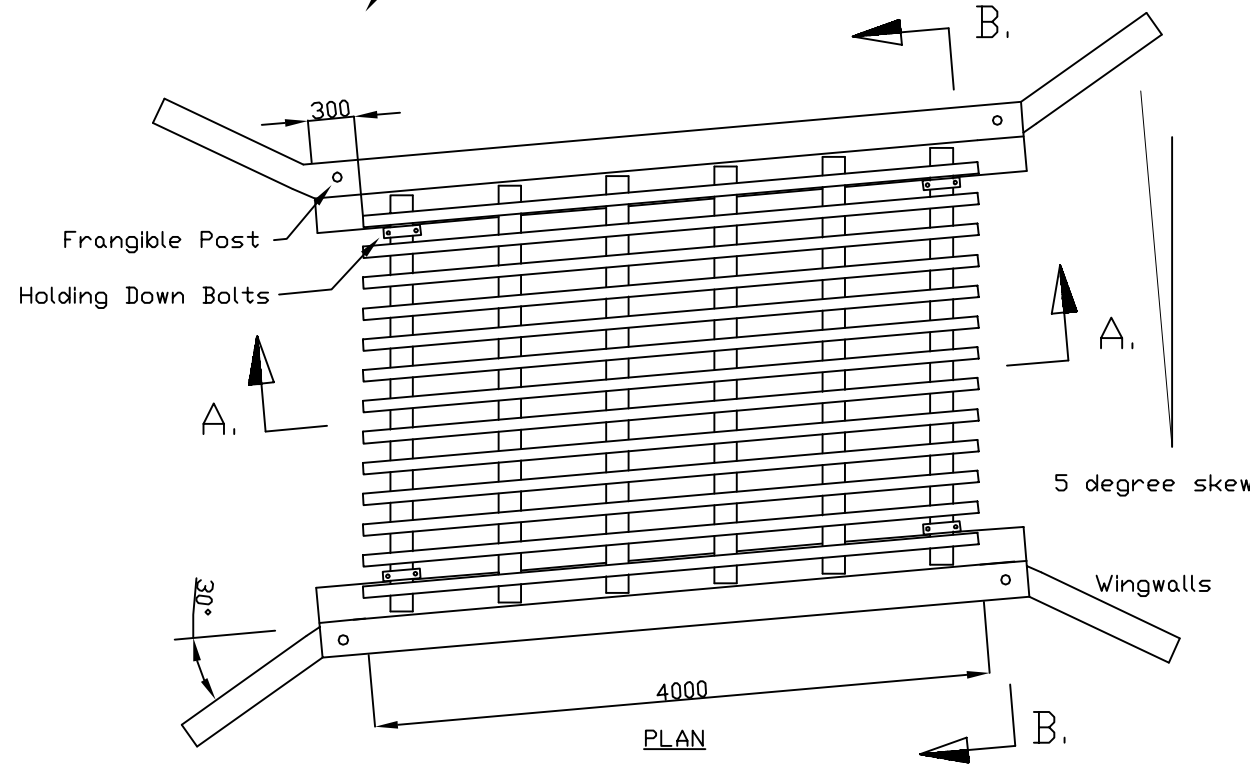


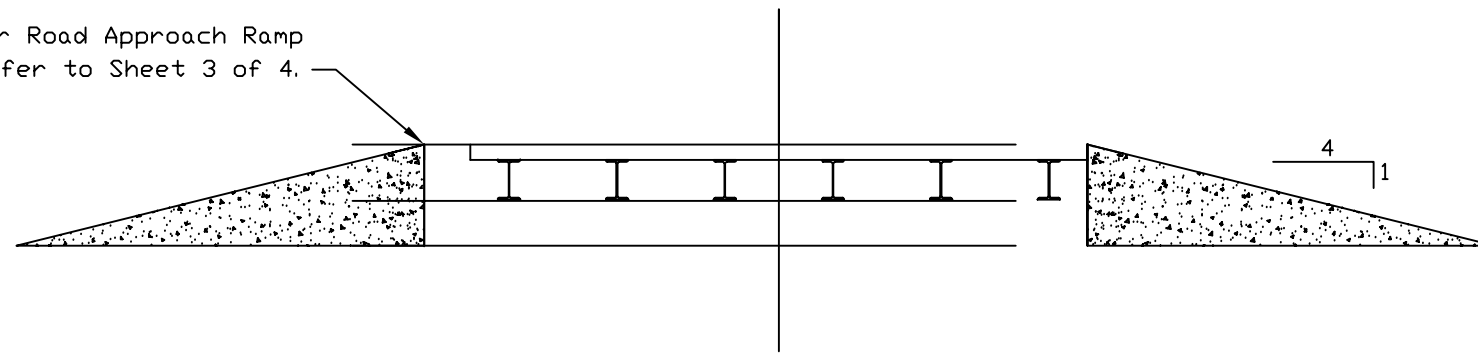
FOR A 4M WIDE GRID
BEARERS SHALL BE 250UB37.3
6 OFF @ 700MM CENTRES



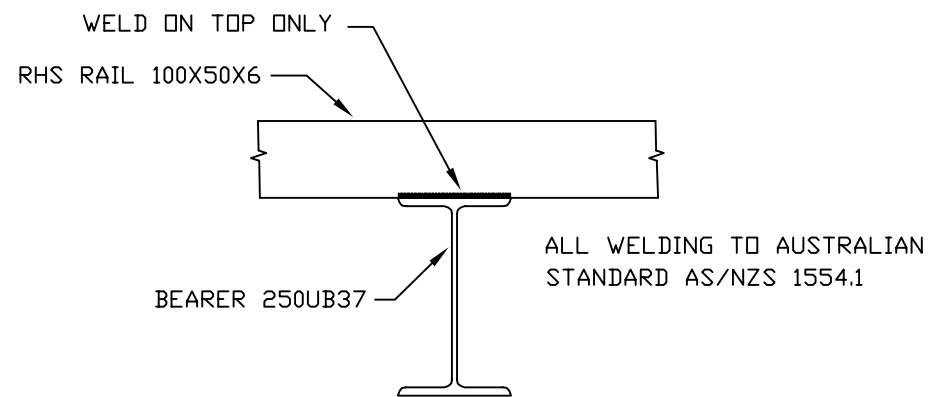
ABUTMENTS MAY BE EXTENDED
TO ACCOMMODATE A FRANGIBLE
FRAME OR FRANGIBLE POSTS.



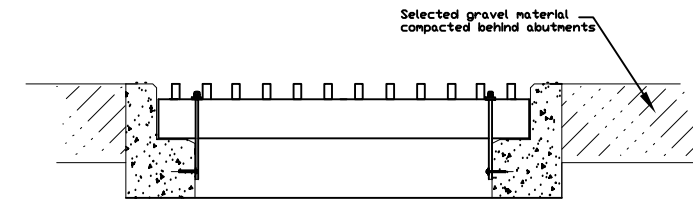
For Road Approach Ramp
refer to Sheet 3 of 4.



SECTION AA
GRID FRONT VIEW



RAIL TO BEARER
WELDING DETAIL



SECTION BB
GRID SIDE VIEW

NOTES

1. THE SPAN OF GRIDS may be either 2400 or 2700mm. STANDARD SIZES OF GRIDS for normal installation are shown below. Transport Operators are responsible for arranging for Wide Load Permits where single 4m long x 2.7m wide grid segments are used. Alternatively 2.0m or 2.5m long segments may be used provided holding down bolts are installed at each corner of each segment. (a) Even numbers of standard segments should be used where possible. (b) Elsewhere even numbers of non-standard segments should be used. These should vary from the standard segment only in width of the segment and the number and the spacing of the bearers. The standard width may be varied as required, provided the bearer spacing does not exceed 750, and the rail overhang does not exceed 275.

STANDARD GRID WIDTHS			
Pavement Width, m	Formation Width, m	Min. Grid width m	Grid Segments
Unsealed	6.0m to 8.0	4.0	1/4.0m segments
Seal Width 3.5, 4.0	6.0m to 8.0	8.0	2/4.0m segments
Seal Width 6.0, 6.5, 7.0	8.5, 9.0	9.0	to use 2/2.5m & 2/2.0m segments
Seal Width 6.0, 6.5, 7.0	greater than 9.0	10.0	4/2.5m segments

2. WIDTH MARKERS are required for all Grids.
3. Commercially manufactured Grids may be used provided they are certified to meet Austroads (1992) T44 and W70 Loading Conditions
4. As an alternative, grids constructed in accordance with Main Roads Std Drawings 1561 and 1353 may be used.
5. Where CHARTERS TOWERS REGIONAL COUNCIL Standard Drawings are silent, the requirements of Main Roads Std Drgs 1561 and 1353 shall apply.
6. Where a grid is composed of two or more segments, the max. spacing between shall be 40mm.
7. Alternative member sizes will be acceptable if supported by a certification from a RPEQ that those sizes will be suitable for Austroads (1992) T44 and W70 Loading conditions.

MK	DETAILS OF AMENDMENTS	APPROVED BY:	DATE

CHARTERS TOWERS REGIONAL COUNCIL
12-14 MOSMAN STREET
(P.O. BOX 189)
CHARTERS TOWERS, QLD, 4820
Phone(07)47615300 Fax(07)47615344

SURVEY	SCALENTS
DATUM	CHECKED DATE
DESIGN	APPROVED DATE
DRAWN: RUGOUGH	APPROVED EXEC. MGR. ROADS INFRASTRUCTURE

S0049-4 GENERAL GRID ARRANGEMENT

SHEET 2 OF 4					
A3					
a	b	c	d	e	f