

**Charters Towers
Regional Council
Local Government
Infrastructure Plan
(LGIP)**

Priority Infrastructure Area (PIA)
Boundary

Existing Trunk Stormwater

- Concrete Lined Drain
- Underground Reinforced Concrete Pipe 375-500mm
- Local Road Table Drains
- Piped Drainage

Stormwater Service Catchment

- Charters Towers
- Greenvale
- Pentland
- Ravenswood

Other Map Layers

- Cadastral Boundary
- Waterway
- Railway Network

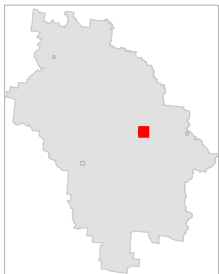
DISCLAIMER

Based on or contains data provided by the State of Queensland (Department of Natural Resources and Mines) (2019). In consideration of the State permitting use of this data you acknowledge and agree that the State gives no warranty in relation to the data (including accuracy, reliability, completeness, currency or suitability) and accepts no liability (including without limitation, liability in negligence) for any loss, damage or costs (including consequential damage) relating to any use of the data. Data must not be used for direct marketing or be used in breach of the privacy laws.

This map contains features that have been digitised and are approximately located.

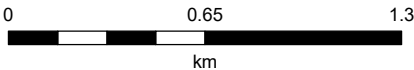
Cadastral boundaries as at December 2019 sourced from QSpatial.

Geocentric Datum of Australia (GDA94)

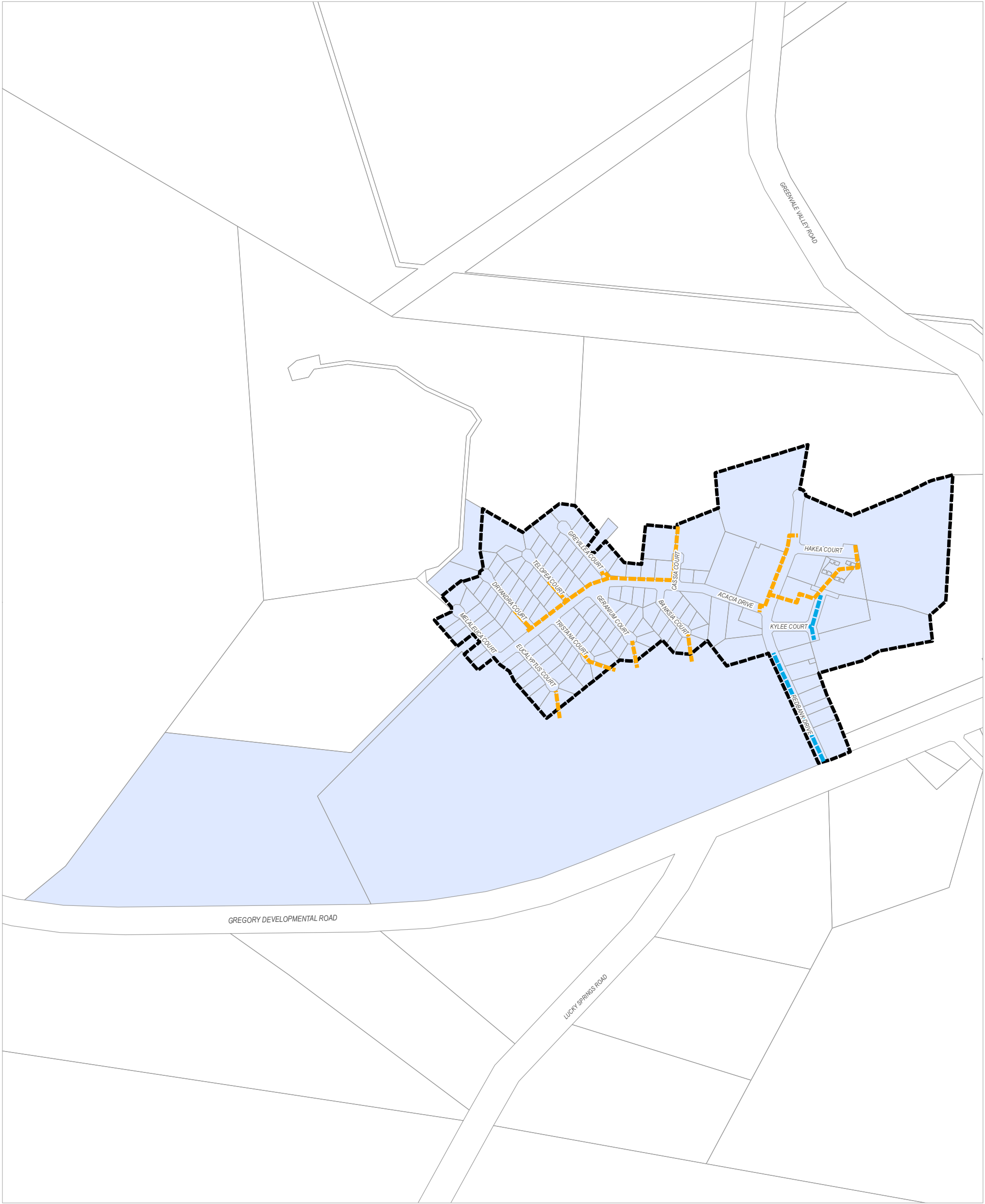


29/12/2019

Approx Scale @ A3 1:25,000



**Plan for Trunk Stormwater
Infrastructure - LGIP 4.1
Charters Towers**



**Charters Towers
Regional Council
Local Government
Infrastructure Plan
(LGIP)**



**Priority Infrastructure Area (PIA)
Boundary**

Existing Trunk Stormwater

- Concrete Lined Drain
- Underground Reinforced
Concrete Pipe 375-500mm
- Local Road Table Drains
- Piped Drainage

Stormwater Service Catchment

- Charters Towers
- Greenvale
- Pentland
- Ravenswood

Other Map Layers

- Cadastral Boundary
- Waterway
- Railway Network

DISCLAIMER

Based on or contains data provided by the State of Queensland (Department of Natural Resources and Mines) [2019]. In consideration of the State permitting use of this data you acknowledge and agree that the State gives no warranty in relation to the data (including accuracy, reliability, completeness, currency or suitability) and accepts no liability (including without limitation, liability in negligence) for any loss, damage or costs (including consequential damage) relating to any use of the data. Data must not be used for direct marketing or be used in breach of the privacy laws.

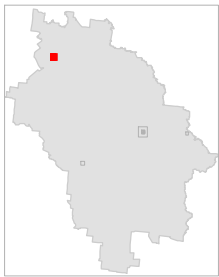
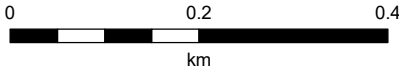
This map contains features that have been digitised and are approximately located.

Cadastral boundaries as at December 2019 sourced from QSpatial.

Geocentric Datum of Australia (GDA94)

29/12/2019

Approx Scale @ A3 1:8,000



**Plan for Trunk Stormwater
Infrastructure - LGIP 4.2
Greenvale**

